



Approved Dealer
Equipment

PRODUCT
ANNOUNCEMENT

SERVICE
BY LEXUS

APPROVED DEALER
EQUIPMENT

For more information or to order, visit www.techstreamsupport.com

techstream
LITE

Factory Service Information
and Diagnostics for
your shop!



\$1,645.00

MODEL NO. TSLP3SW01



The Techstream LITE Kit (TSLP3SW01) Includes:

Mongoose-Plus™ MFC3 Interface by Opus IVS

A high-performance J2534 vehicle interface module that connects a PC directly to the OBD-II connector.

- Operates with Factory Techstream scantool software to diagnose most 1996 and newer Toyota/Lexus/Scion models.†
- Compatible with most computers including netbooks.

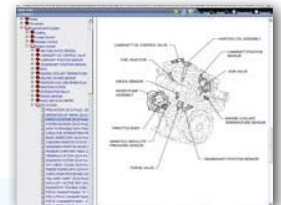
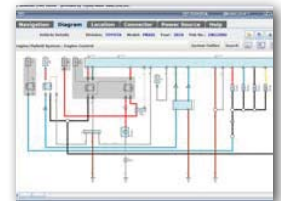
Warranty: 12 Months from date of shipment to be free from physical defects in material and workmanship under normal use.

One Year Subscription to TIS

- Technical Library
- Techstream Software & Reprogramming Calibrations



Direct-Hit Access for
Toyota/Scion/Lexus vehicles



\$260.00
Total Savings

\$545 Value - Mongoose-Plus™ MFC3 Interface
+ **\$1,360 Value** - One Year TIS Professional
Diagnostic Subscription

= \$1,905 Combined Total Value
if components are purchased separately.



Disclaimers: (1) Any PC used must meet minimum requirements. PC not included; (2) Product information and pricing are subject to change without notice. Prices noted are in U.S. dollars. (3) All marks are that of their respective holders. † 2020 and newer GR Supra requires an additional diagnostic cable.

*See page 2 for Technical Information and Minimum PC Requirements >>



Approved Dealer
Equipment

**PRODUCT
ANNOUNCEMENT**

SERVICE
BY LEXUS

APPROVED DEALER
EQUIPMENT

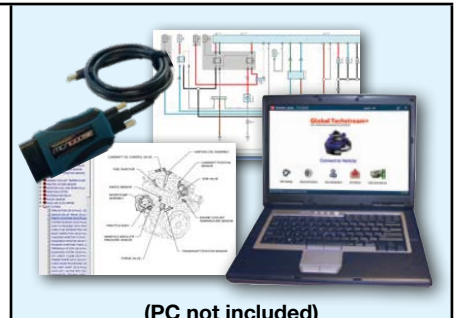
To place an order, visit www.techstreamsupport.com or call 1-800-368-6787.



Full TIS Techstream ADVi
TSADVUNITEAM
\$6,229.00

Techstream LITE Kit
TSLP3SW01
\$1,645.00

**Techstream LITE
OEM Level Diagnostics
support for most 1996 and
newer model year Toyota
and Lexus vehicles.†**



(PC not included)

Technical Capabilities Comparison:

Legacy Model Support with DLC3 (OBD II) · DTC · Datalist · Active Test · Monitor · Utility	1996 - Present	1996 - Present
Reprogramming	Yes	Yes
Health Check	Yes	Yes
Customize (C-BEST)	Yes	Yes
TIS Professional Diagnostics Subscription <ul style="list-style-type: none"> Library (Repair Manual, EWD, TSB, and more) One Techstream Diagnostic Software License ECU Reprogramming Calibrations IDENTIFIX FIND FIXES FASTER™ Direct-Hit Access for Toyota/Scion/Lexus vehicles • Visit https://techinfo.toyota.com for details	Two Years \$2,720 Value (Includes Direct-Hit Access)	One Year \$1,360 Value (Includes Direct-Hit Access)

PC Requirements:

Supported Operating Systems	Windows 10 (MongoosePRO MFC, MongoosePRO MFC2 and Mongoose-Plus MFC3) 32 bit or 64 bit
System Memory	4 GB or Higher
Available Disc Space	5 GB Minimum
Processor Speed	1.5 GHz or greater
Network Connection	Standard broadband internet connection is required for Techstream Software to operate. 1.2 Mbps minimum
USB	1.1 / 2.0 / 3.0
USB 2.0 / 3.0 Extension Length	16 feet maximum
Display Color	24-bit
Display Resolution	Minimum: 1024 x 768
Browser	Internet Explorer 11, Firefox 21.0 or later, Google Chrome
TIS Plug-Ins	Adobe Flash Player 11 or Later, Java™ Version 7 or later, Adobe SVG 3.03 Adobe Reader 7 or later*

Disclaimers: (1) Any PC used must meet minimum requirements. PC not included; (2) Product information and pricing are subject to change without notice. Prices noted are in U.S. dollars. (3) All marks are that of their respective holders. † 2020 and newer GR Supra requires an additional diagnostic cable.
Privacy Policy: <https://sbs.snapon.com/privacy-policy/>

Visit <https://techinfo.toyota.com> for
additional technical information.

EQS001070AM REV0224