

# Techstream Lite Mongoose-Plus and MongoosePro Quick Start Instructions

## Components

Techstream Lite is a supplemental low-cost diagnostic platform comprised of GTS+ Diagnostic Software, Generic Laptop/PC and a Techstream Lite Kit (current kit include a Mongoose-Plus MFC3 VIM)

### GTS+ Software



Generic Laptop/PC

Mongoose-Plus MFC3 VIM

## Laptop/PC Requirements

Confirm your Laptop/PC meets these minimum requirements:

Supported Operating Systems	Windows 10 or Windows 11 (Mongoose-Plus MFC3, MongoosePro MFC2 and MongoosePro MFC only) 32 bit or 64 bit
System Memory	4 GB or Higher
Available Disc Space	5 GB Minimum
Processor Speed	1.5 GHz or greater
Network Connection	Standard broadband internet connection is required for Techstream Software to operate. 1.2 Mbps minimum
USB	1.1 / 2.0 / 3.0
USB 2.0 / 3.0 Extension Length	16 feet maximum
Display Color	24-bit
Display Resolution	Minimum: 1024 x 768
Browser	Google Chrome Firefox 21.0 or later MS-Edge
TIS Plug-Ins	Java™ Version 7 or later Adobe SVG 3.03 Adobe Reader 7 or later

## Getting Started

First, obtain a Laptop/PC that meets minimum network and hardware requirements. Then, configure your Techstream Lite using three easy steps:

- Step 1:** Install the Mongoose-Plus or MongoosePro software to your laptop/PC
- Step 2:** Install GTS+ software on your laptop/PC
- Step 3:** Select the VIM in GTS+

See back for more detail

## Support Information

The Techstream Lite support team will help you with Techstream Lite installation, Agent Lite & GTS+ Software installation, and Mongoose-Plus and Mongoose Pro VIM hardware issues. To speak to a support agent, contact the number listed below.

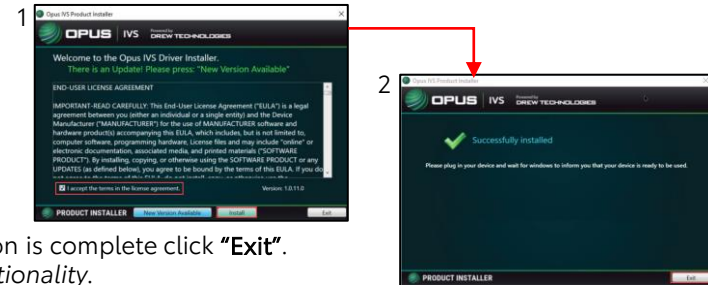
Techinfo Support: **1-877-7666**

# Techstream Lite Mongoose-Plus and MongoosePro Quick Start Instructions

## Step 1: Install the Mongoose-Plus or Mongoose Pro Software

Mongoose-Plus MFC3 and MongoosePro MFC/MFC2 software can be downloaded from TIS (TIS>Diagnostics>Scantool>Techstream Software)

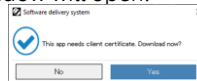
- After launching the installer downloaded from TIS, select **"I accept the terms in the License Agreement"** and press **"Install"**



- When informed, attach the Mongoose-Plus or MongoosePro MFC/MFC2 device. AFTER installation is complete click **"Exit"**.  
*Note: Some devices may require activation. If prompted, complete activation for proper functionality.*

## Step 2: Install Agent Lite & GTS+

- Download the Agent Lite Software (TIS>Diagnostics>Scantool>Techstream Software)
- Install Agent Lite after download completes. Then in the bottom RH corner of the screen a dialogue box will appear. Select Yes, then a browser window will open.



- Login using your Techinfo credentials.
- After the login is successful, select Open AgentLiteSsoLogin.
- After about 1 minute a new window will open. This is the Agent Lite home screen.
- To download the latest GTS+ software, select the Install Now button. Then select Yes in the popup to download & install GTS+.



- Once the software is downloaded completely, you will be asked if you want to install GTS+ now. Select Yes.
- Agent Lite will begin installing GTS+. This may take up to 15 minutes. Once installed, you will have a GTS+ icon on the desktop. Select Please Reboot Now when the popup appears. If a PC reboot is not prompted, it is recommended.
- Launch GTS+ by double-clicking the desktop icon. It will open in a browser based on Windows default settings (Chrome, Edge, FireFox)

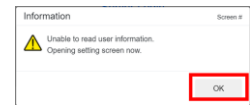


## Step 3: Select the VIM in GTS+

- Select appropriate Country and User Type (Public User) from the dropdown and click Server Login.



- At Initial login to a new PC, you will receive a user information message. Proceed with the on-screen prompts and set your user preferences as desired .



- Confirm the appropriate VIM has been selected before connecting to a vehicle.
- Select the VIM based on your hardware:
  - MongoosePro MFC/MFC2
  - Mongoose-Plus MFC3

